



# BEAUFORT GREEN

# Netherwood Road, W14

## £600,000



A spectacular and spacious two-bedroom split-level maisonette, occupying the second and third floors and benefiting from an abundance of natural light throughout. The property features two generous double bedrooms, including a superb principal bedroom with a walk-in wardrobe that offers potential to be converted into an en suite bathroom, subject to the usual consents.

Ideally positioned on a quiet residential street in the heart of Brook Green, this attractive home is just moments from an excellent selection of shops, cafés and restaurants. Westfield London and the exciting Kensington Olympia redevelopment are also within easy reach, while superb transport connections can be found nearby at Olympia, Hammersmith Broadway and Shepherd's Bush stations, offering both Underground and Overground services.





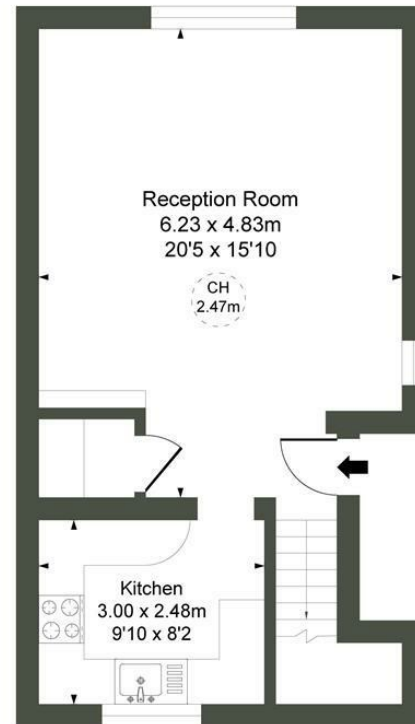
# BEAUFORT GREEN



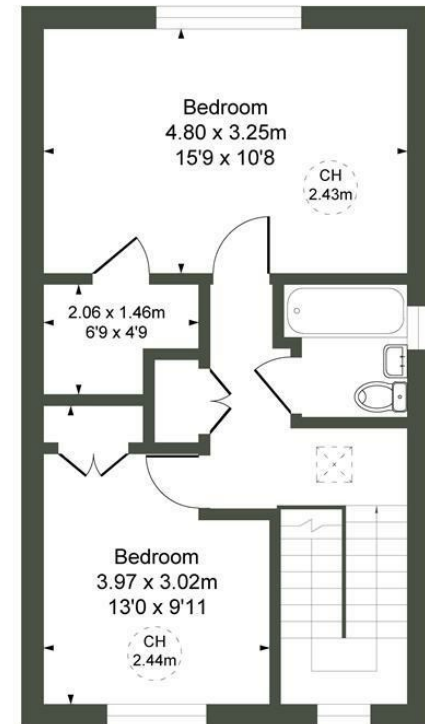
# BEAUFORT GREEN

Netherwood Road,  
W14

GIA  
(Approx) 84.19 sqm / 906 sqft



Second Floor



Third Floor

## At a Glance.

- Spacious Two Double Bedroom Apartment
- Top Floor
- Share Of Freehold
- Seperate Kitchen
- Generous Living Room
- EPC Rating C

CH refers to the ceiling height in this plan. This floor plan is provided for illustrative purposes only and has been prepared in accordance with the RICS Code of Measuring Practice. It is not to scale, and all measurements and areas are approximate and should not be relied upon for accuracy. The plan should not be used for valuation or other decision-making purposes. Whilst every effort has been made to ensure accuracy, no responsibility is accepted for any errors or omissions.

# BEAUFORT GREEN

02074594100

[charlie@beaufortgreen.co.uk](mailto:charlie@beaufortgreen.co.uk)

---

263 New Kings Road  
London  
SW16 1DB